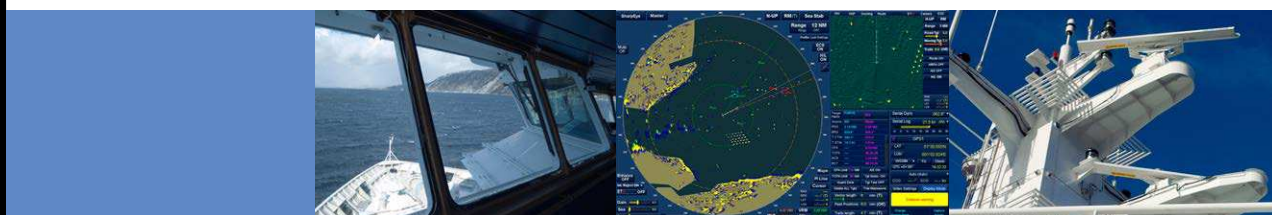


NAVIGATION RADAR

INTEGRATED RADAR DISPLAY

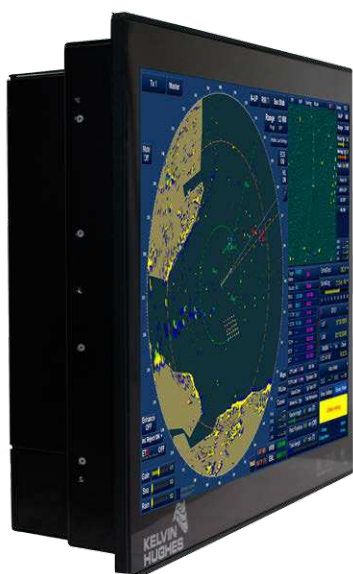


The latest navigation radar innovation from Kelvin Hughes is the new integrated ARPA radar display which has taken all the market leading software functionality from the previous MantaDigital™ radar series, added a few improvements and reborn in a brand new package.

The integrated radar display is designed to complete the X-band and SharpEye™ S-band radar transceivers series as part of a fully redundant networked system, removing the need for distribution and other interfaces.

The integrated radar display provides radar, chart radar and Electronic Chart System (ECS) in a single networkable system with a host of features supporting navigation, route planning and training.

The radar display is type approved (MSC192/79 / IEC 62388 ED2) and provides enhanced collision avoidance and situational awareness features such as dual Plan Position Indicator (PPI), collision warning, spy scope and Enhanced Target Detection (ETD) mode.



Integrated IEC60945 IP67 keyboard, IP68 ergonomic trackball and scroll wheel, USB 3.0 port, LED dimmable backlighting



BENEFITS

EASE OF OPERATION

22" AND 26" DISPLAY OPTION

LED WIDESCREEN WITH ANTI-REFLECTIVE GLASS
REDUCING SUN GLARE

EASY CONSOLE INSTALLATION

SIMPLE INTERCONNECTION (1 x ETHERNET AND 3 x USB)

NETWORKED SYSTEM

FIFTH GENERATION 64 BIT OPERATING SYSTEM

DUAL REDUNDANT NETWORK (OPTION)

SERIAL RADAR TRANSCIVER DISTRIBUTION VIA NETWORK

REMOTE DIAGNOSTICS

SOLID STATE HARD DRIVE (FAST RECOVERY
CONFIGURATION FILES)

VOYAGE DATA RECORDER (VDR) INTERFACE
- ETHERNET CONNECTION TO KELVIN HUGHES X-VDR
- DVI CONNECTION FOR THIRD PARTY VDR

SOFTWARE OPTIONS

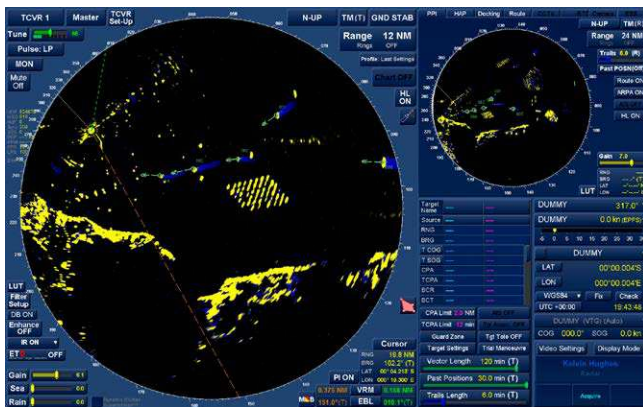
DESKTOP / DECKHEAD MOUNTING OR DECK STAND OPTION



SITUATIONAL INTELLIGENCE, THE WORLD OVER

INTEGRATED RADAR DISPLAY

FEATURE RICH / CLEAR NAVIGATION



Radar picture generated from a Kelvin Hughes 12kW X-band transceiver with different range scales shown on each PPI



Radar picture generated from a SharpEye™ S-band transceiver with chart overlay enabled and ETD mode available on the primary or secondary PPI

FEATURES

- USER DEFINED PROFILES
- INTEGRAL SIMULATOR
- ETD MODE
- SPYSCOPE
- DEPTH DISPLAY
- MAN-OVERBOARD MARKER WITH DRIFT COMPENSATION AND ELAPSED TIME INDICATOR
- ELECTRONIC TAPE MEASURE FOR RAPID RANGE AND BEARING
- SINGLE OR DUAL PPI
- ARPA/AIS CONTACT FUSION
- TWO ELECTRONIC BEARING LINES
- TWO VARIABLE RANGE MARKERS
- AUTOMATIC CONTACT ACQUISITION ZONES
- POLYZONE ACQUISITION EXCLUSION ZONES



SYSTEMS

CMSSE-22	S-BAND SHARPEYE™ SOLID-STATE RADAR SYSTEM WITH 22" DISPLAY
CMSSE-26	S-BAND SHARPEYE™ SOLID-STATE RADAR SYSTEM WITH 26" DISPLAY
CMX12-22	X-BAND 12kW RADAR SYSTEM WITH 22" DISPLAY
CMX12-26	X-BAND 12kW RADAR SYSTEM WITH 26" DISPLAY



Follow us   

Scan for further information



UK (Head Office): Kelvin Hughes Ltd
Voltage, Mollison Avenue,
Enfield
EN3 7XQ, UK
t: +44 (0)1992 805 300

Benelux: Kelvin Hughes (Nederland) BV
Rotterdam: t: +31 10 472 4050

Far East: Kelvin Hughes Pte Ltd
Singapore: t: +65 6545 9880

Scandinavia: A/S Kelvin Hughes
Copenhagen: t: +45 8611 2888



SITUATIONAL INTELLIGENCE, THE WORLD OVER

WWW.KELVINHUGHES.COM

surveillance@kelvinhughes.com